



GMT MONTHLY MEMBERSHIP PROGRESS REPORT

Results as of: 5/31/2019

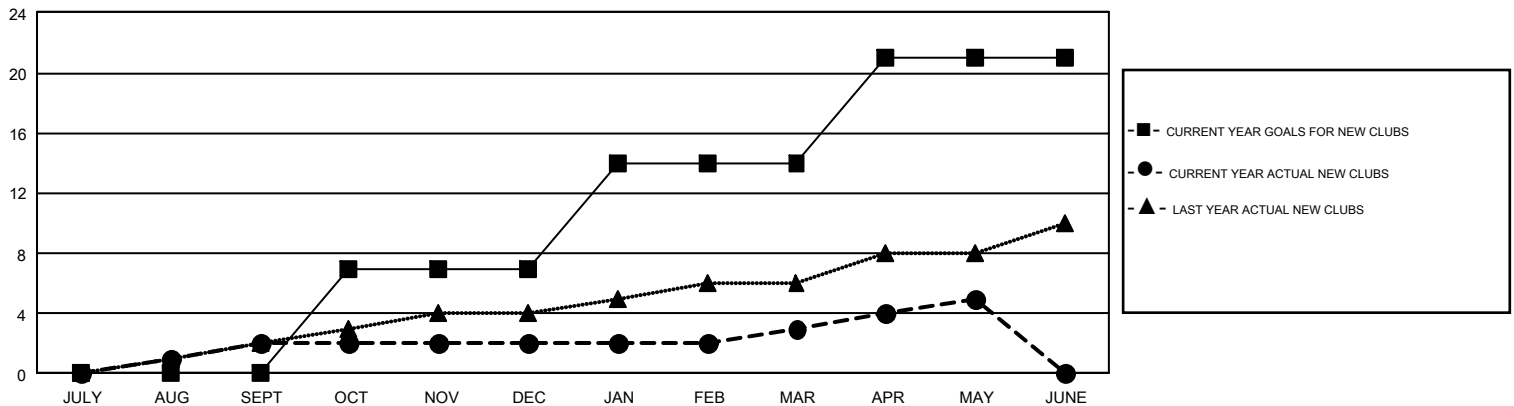
GMT Constitutional Area 7, Group A

GMT: ANN ELDRIDGE

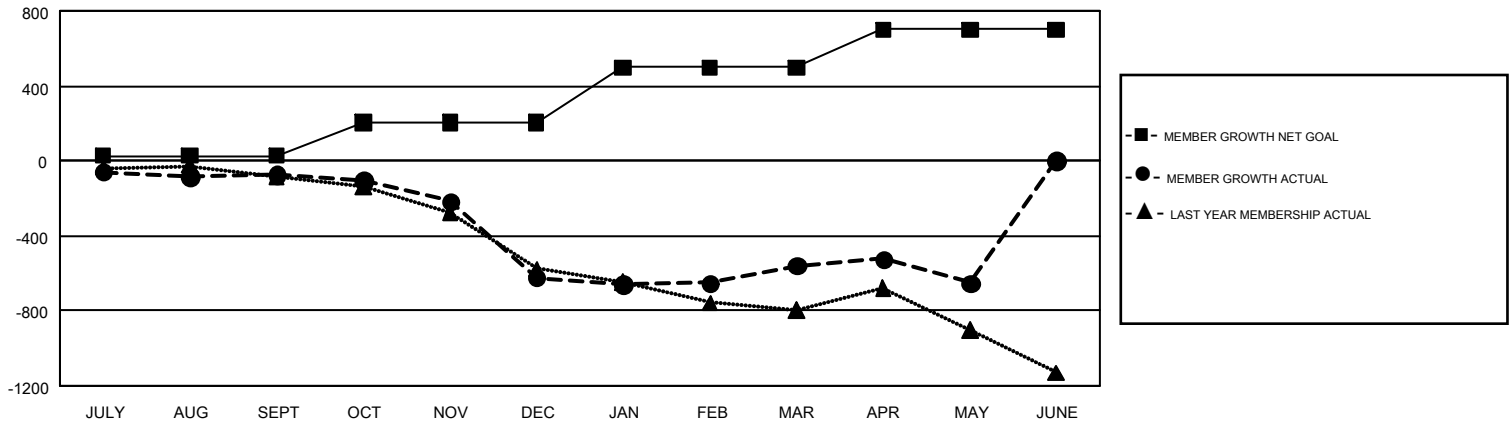
REPORT DOES NOT INCLUDE CLUBS IN UNDISTRICTED AREAS.

Clubs				Members			
RESULTS FOR 2018-2019				RESULTS FOR 2018-2019			
QUARTER	NEW CLUB GOAL	NEW CLUBS	DROPPED CLUBS	QUARTER	MEMBER GROWTH NET GOAL	MEMBER GROWTH ACTUAL	DROPPED MEMBERS ACTUAL (including transfers)
JULY/AUG/SEPT	0	2	7	JULY/AUG/SEPT	26	780	731
OCT/NOV/DEC	7	0	0	OCT/NOV/DEC	179	612	1,079
JAN/FEB/MAR	7	1	9	JAN/FEB/MAR	293	800	627
APR/MAY/JUNE	7	2	3	APR/MAY/JUNE	203	601	618

GOALS AND ACTUAL NEW CLUBS CUMULATIVE



GOALS AND ACTUAL MEMBERS CUMULATIVE



DROPPED CLUBS: 19	788 CLUBS OF 1,210 ADDED 1 OR MORE NEW MEMBERS	<u>GENDER DISTRIBUTION</u>
<u>DROPPED MEMBERS</u>	CLICK HERE FOR CUMULATIVE MEMBERSHIP DATA	MALE 16,442 (65.77%)
DECEASED 273		FEMALE 8,559 (34.23%)
CLUB CANCELLED 43		TOTAL FAMILY UNIT MEMBERS 4,193
OTHER 2,734		FAMILY MEMBERS PAYING HALF DUES 2,122
TOTAL 3,050		